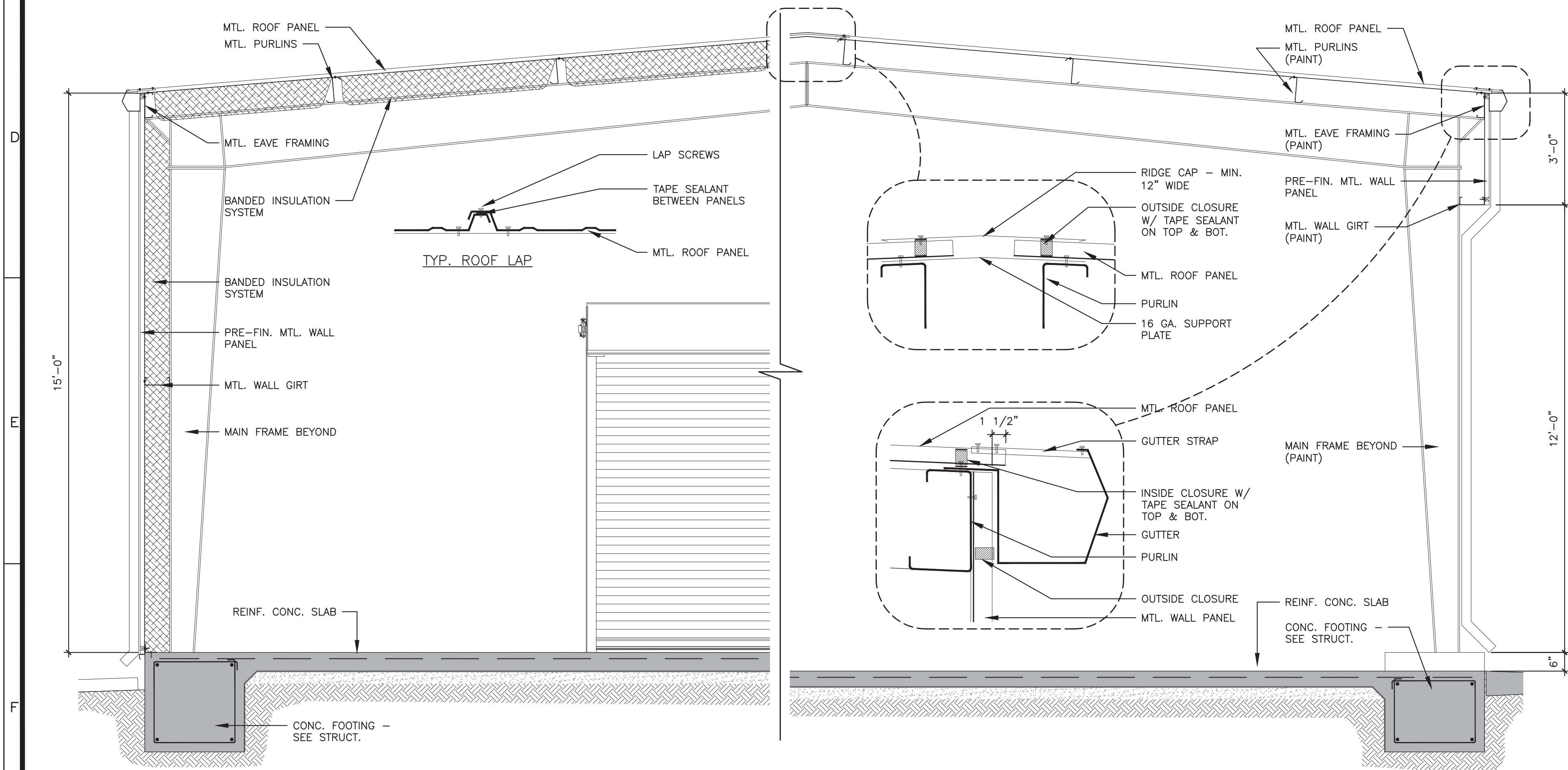
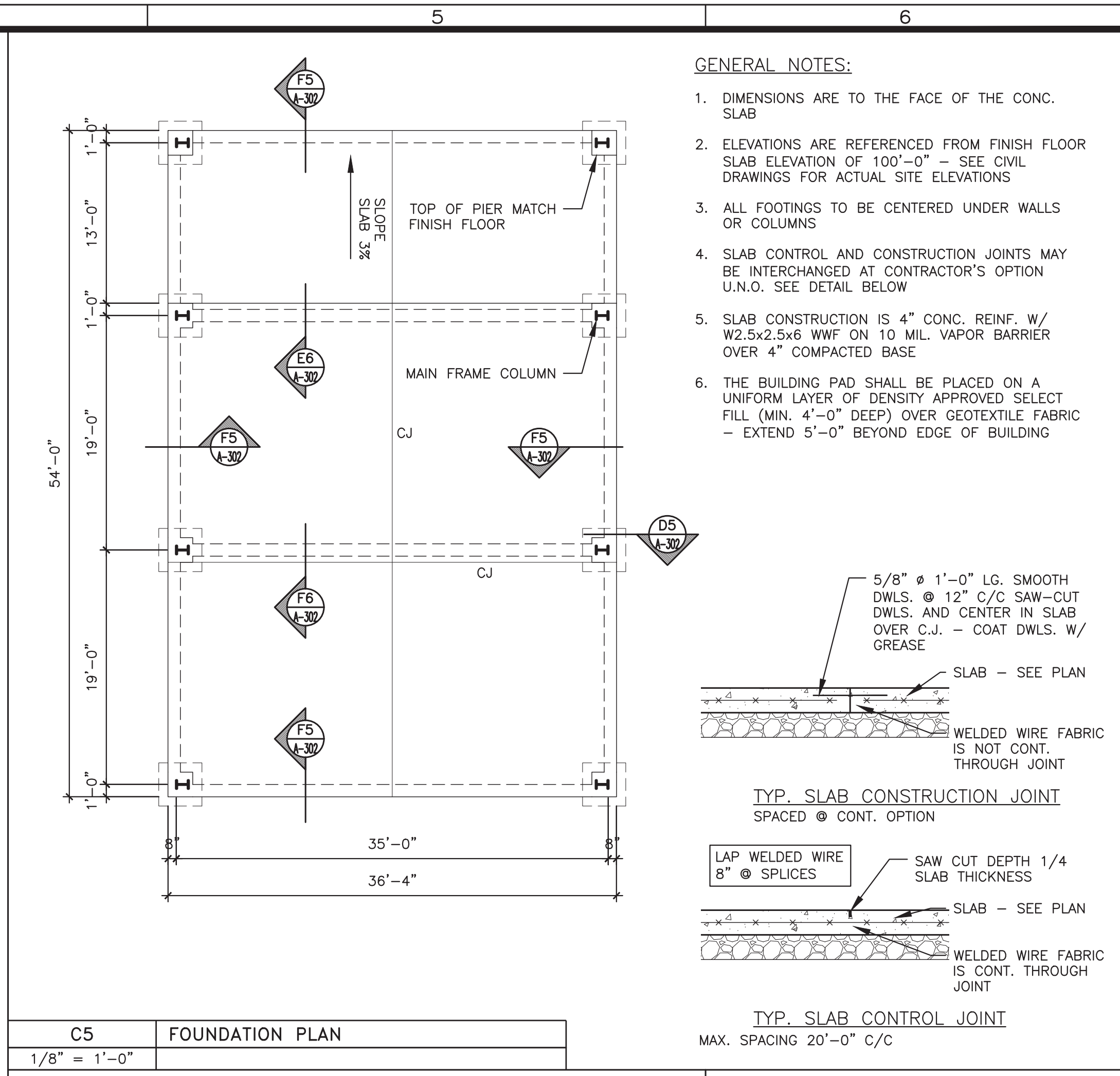


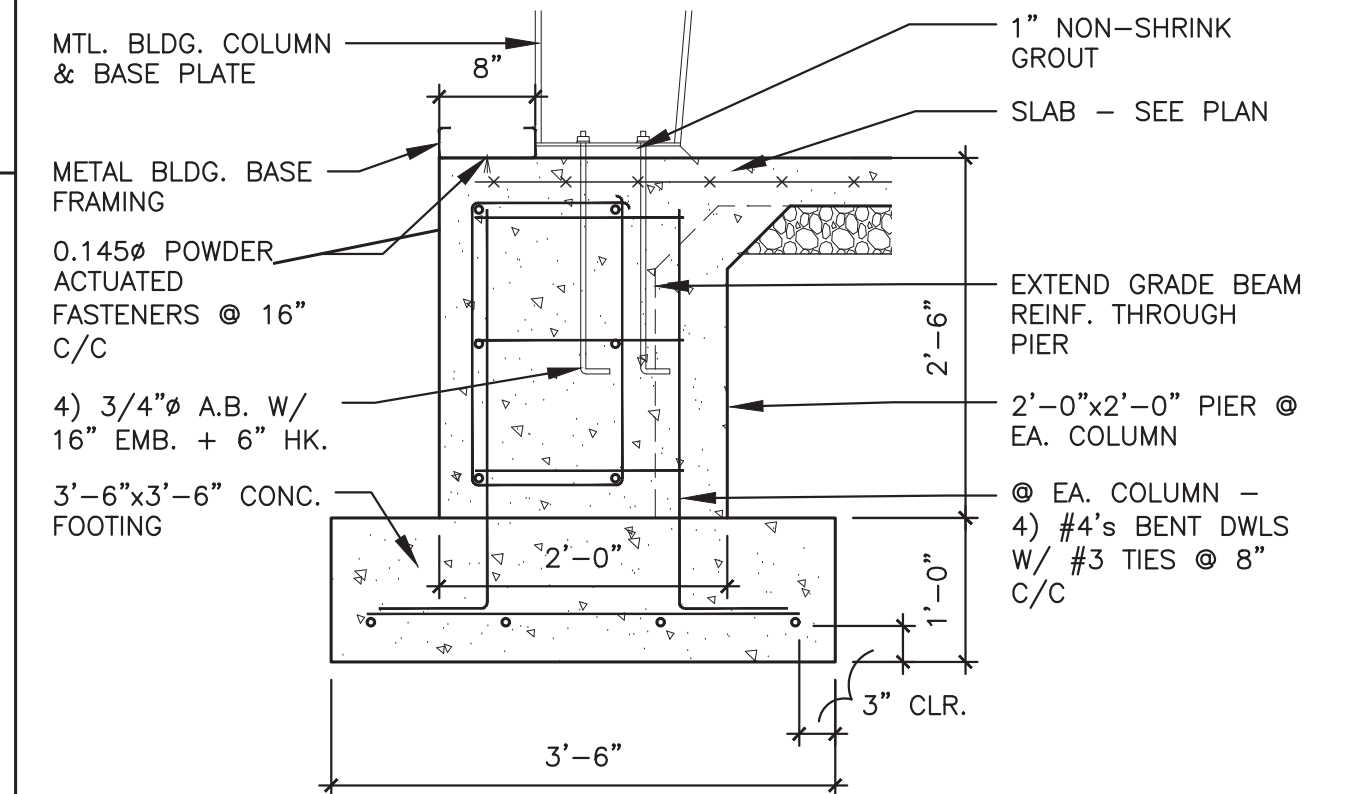
C1 BUILDING SECTION
1/2" = 1'-0"



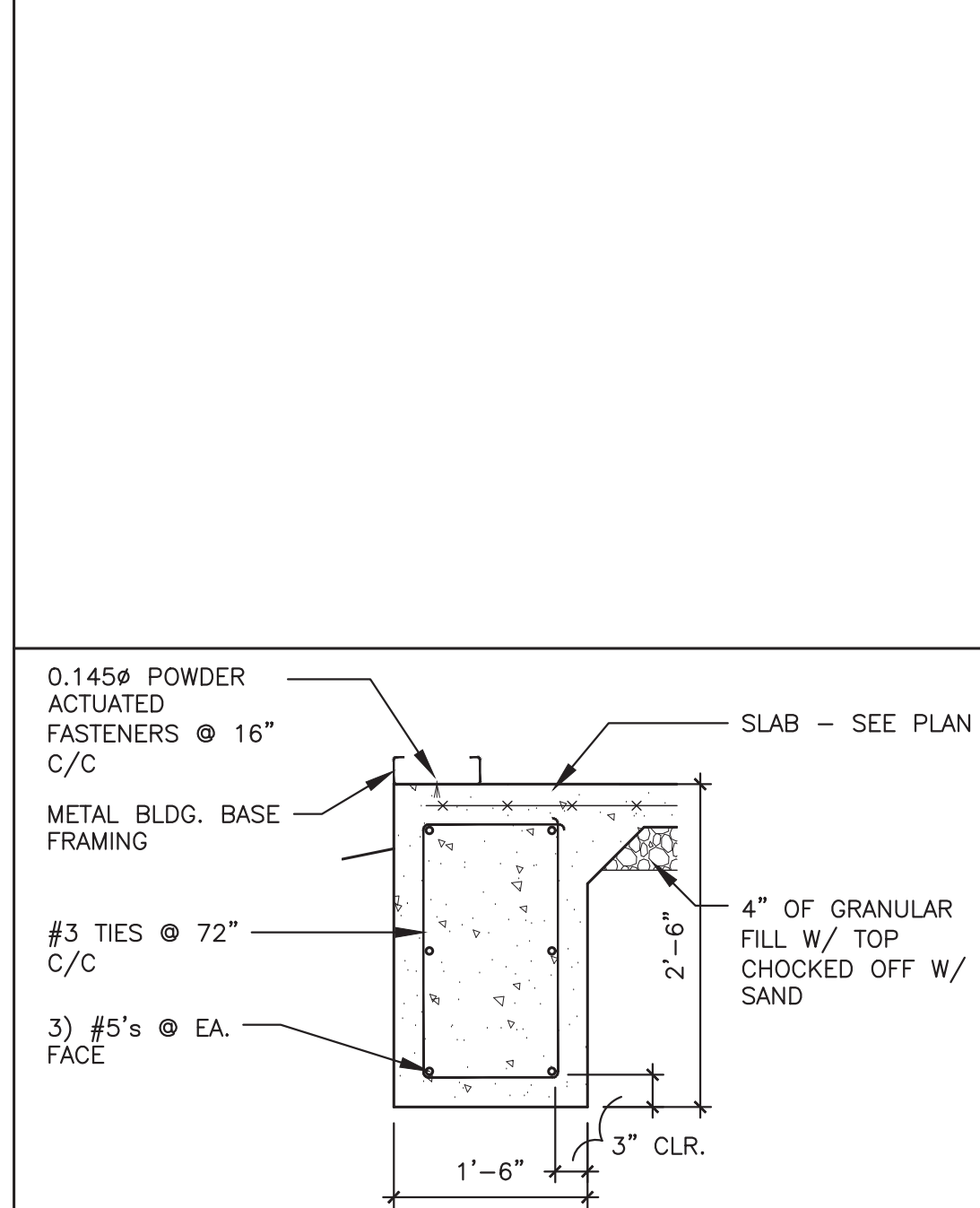
F1 BUILDING SECTION
1/2" = 1'-0"



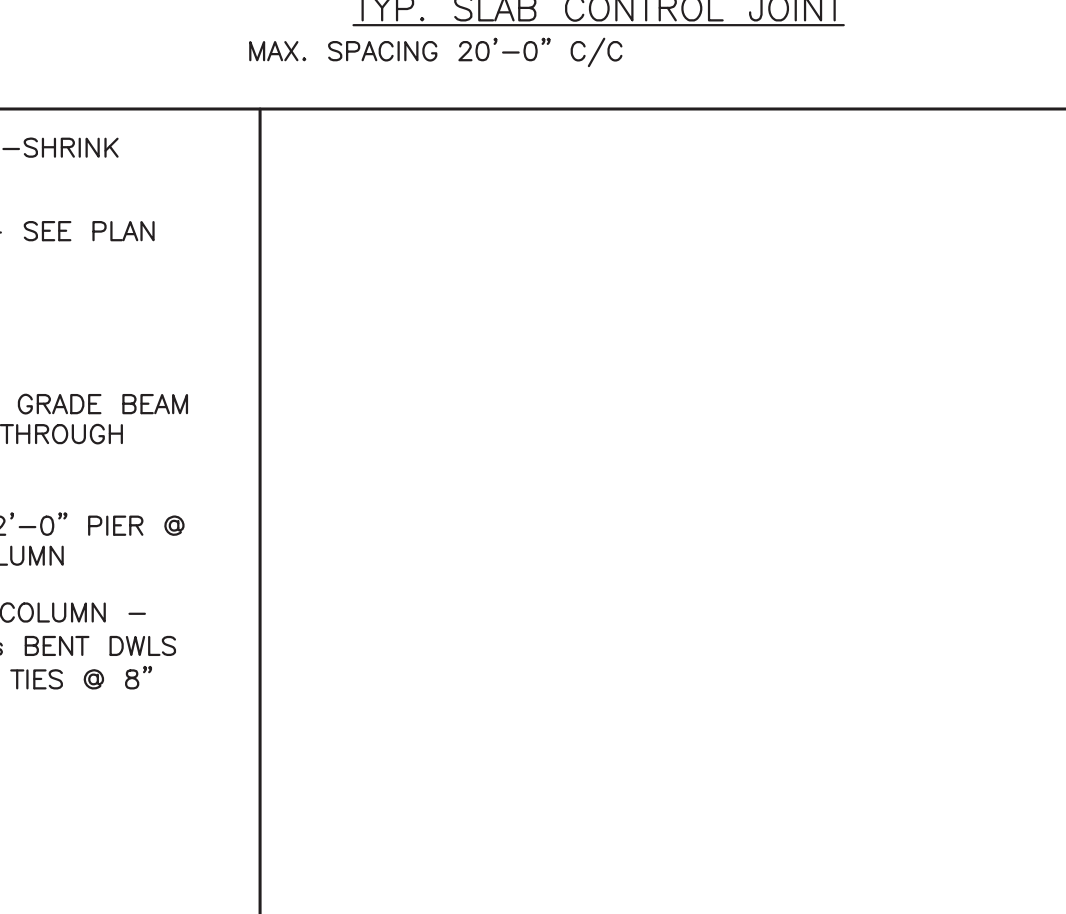
C5 FOUNDATION PLAN
1/8" = 1'-0"



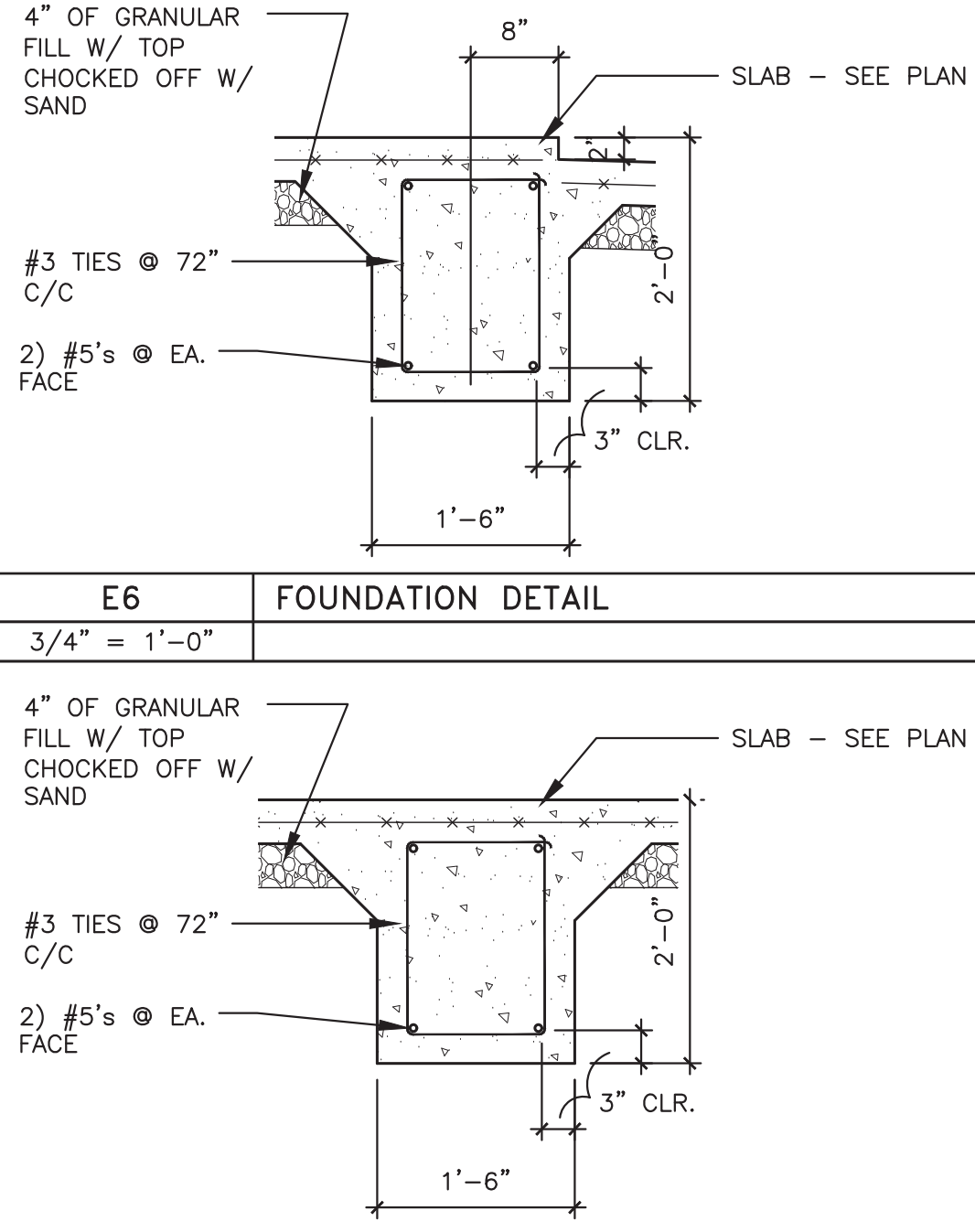
D5 FOUNDATION DETAIL
3/4" = 1'-0"



F5 FOUNDATION DETAIL
3/4" = 1'-0"



E6 FOUNDATION DETAIL
3/4" = 1'-0"



F6 FOUNDATION DETAIL
3/4" = 1'-0"

- GENERAL NOTES:
1. DIMENSIONS ARE TO THE FACE OF THE CONC. SLAB
 2. ELEVATIONS ARE REFERENCED FROM FINISH FLOOR SLAB ELEVATION OF 100'-0" - SEE CIVIL DRAWINGS FOR ACTUAL SITE ELEVATIONS
 3. ALL FOOTINGS TO BE CENTERED UNDER WALLS OR COLUMNS
 4. SLAB CONTROL AND CONSTRUCTION JOINTS MAY BE INTERCHANGED AT CONTRACTOR'S OPTION U.N.O. SEE DETAIL BELOW
 5. SLAB CONSTRUCTION IS 4" CONC. REINF. W/ W2.5x2.5x6 WWF ON 10 MIL. VAPOR BARRIER OVER 4" COMPACTED BASE
 6. THE BUILDING PAD SHALL BE PLACED ON A UNIFORM LAYER OF DENSITY APPROVED SELECT FILL (MIN. 4'-0" DEEP) OVER GEOTEXTILE FABRIC - EXTEND 5'-0" BEYOND EDGE OF BUILDING

